



Flat 7, Gravees Court

St Peter Port, GY1 1RL

£1,450 PCM

A lovely second floor flat ideally located within a short distance of the town centre. The light and airy accommodation comprises good living space, a double bedroom, kitchen and bathroom. At the rear is a communal garden. In addition to the rent is a monthly service charge of £67.70 which includes the water rates.

- Spacious second floor flat
- Available immediately.
- Unfurnished
- No children, pets or smokers
- Walking distance of town
- Service Charge - £67.70pcm

Viewing

Please contact our Lettings Office on 01481 723636 if you wish to arrange a viewing appointment for this property or require further information.



1

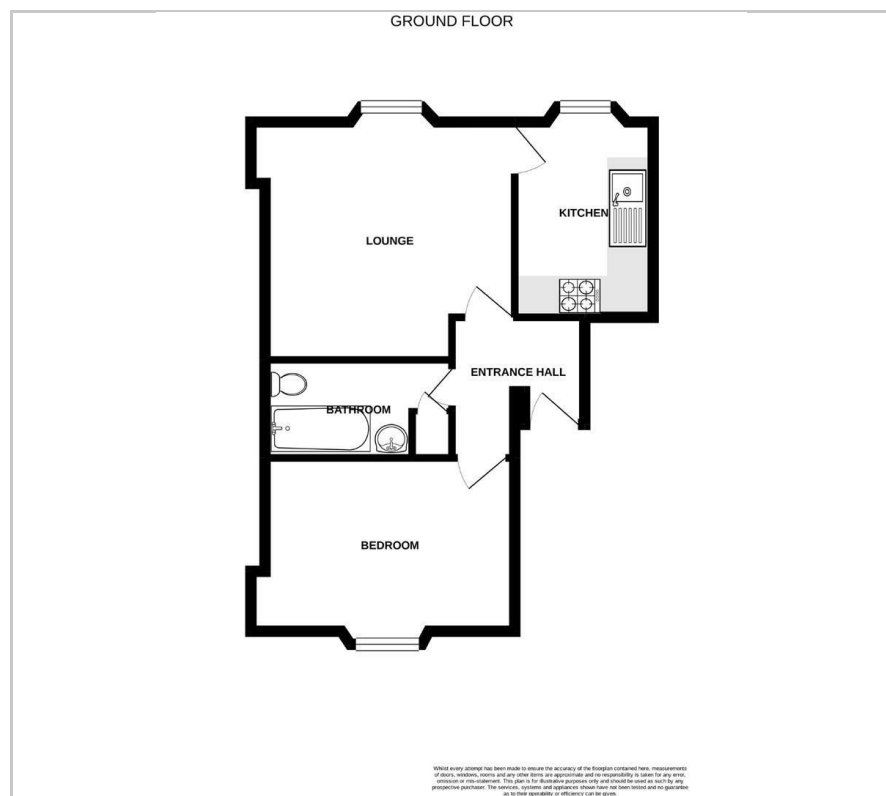


1

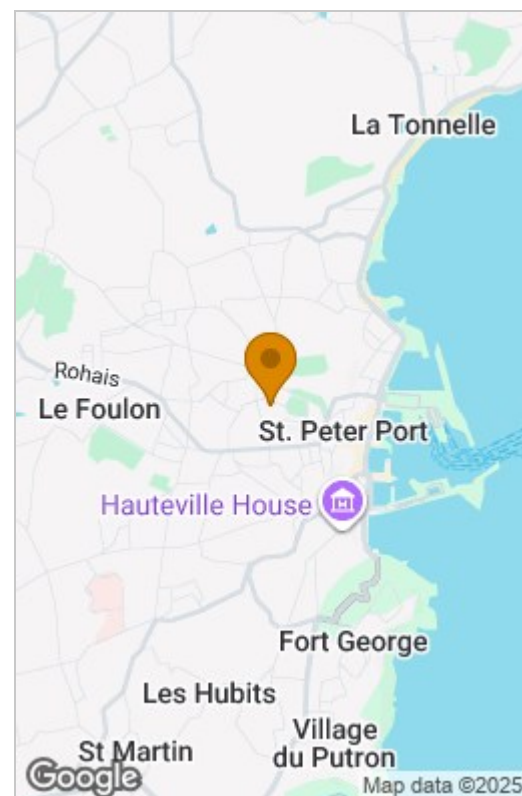


1

Floor Plan



Area Map



These particulars, whilst believed to be accurate are set out as a general outline only for guidance and do not constitute any part of an offer or contract. Intending purchasers should not rely on them as statements of representation of fact, but must satisfy themselves by inspection or otherwise as to their accuracy. No person in this firm's employment has the authority to make or give any representation or warranty in respect of the property.