



## Flat 7, Rondhurst Court, Round Chimney

St Sampson, GY2 4NU

£1,150 PCM

This bedsit style flat forms part of a development of 30 flats just minutes walk from the Bridge amenities. The accommodation comprises entrance hallway with storage, three piece bathroom, kitchen and lounge which is open plan to the sleeping area. Externally, there is a communal garden. In addition to the rent is a monthly service charge of £46.67 per month which includes the water rates. This property is only suitable for single occupants over the age of 40.

- Good size bedsit style flat
- Available from 1st February
- Unfurnished. S/C £46.67 pcm
- No children, pet or smokers
- Suitable for mature 40+ tenants
- Close to the Bridge

### Viewing

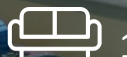
Please contact our Lettings Office on 01481 723636 if you wish to arrange a viewing appointment for this property or require further information.



1



1



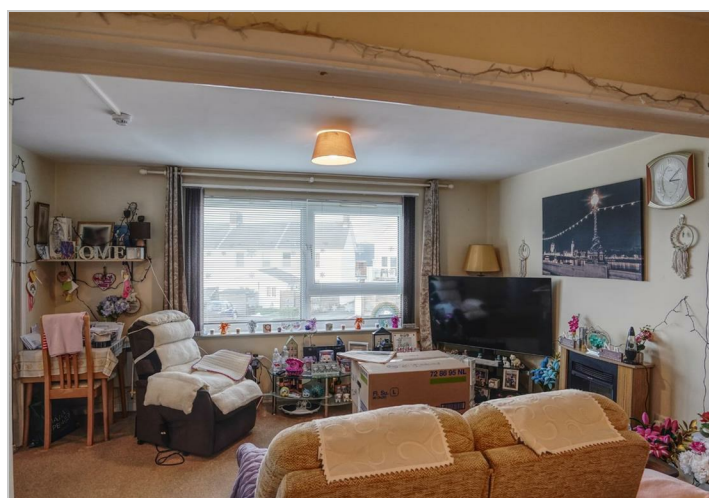
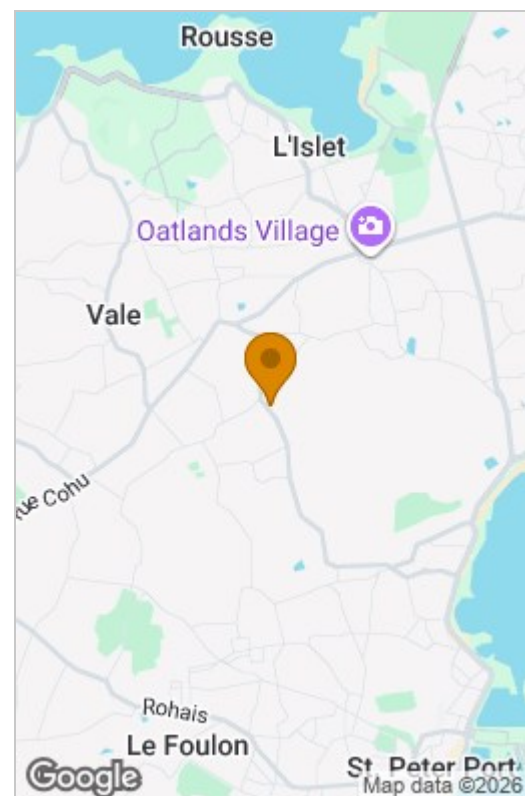
1



## Floor Plan



## Area Map



These particulars, whilst believed to be accurate are set out as a general outline only for guidance and do not constitute any part of an offer or contract. Intending purchasers should not rely on them as statements of representation of fact, but must satisfy themselves by inspection or otherwise as to their accuracy. No person in this firm's employment has the authority to make or give any representation or warranty in respect of the property.